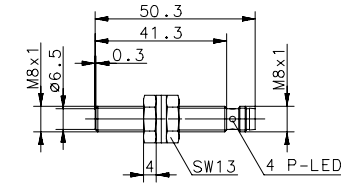
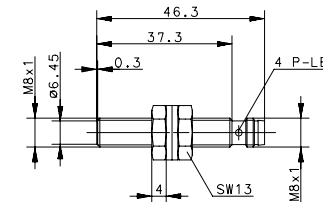
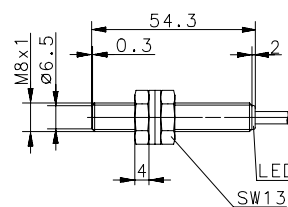
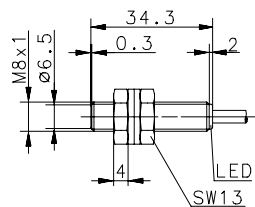


# INDUCTIVE SENSORS Type M8



Type	M8	M8	M8	M8
Enclosure material	Stainless steel 1.4305	Stainless steel 1.4305	Stainless steel 1.4305	Stainless steel 1.4305
Type of installation	flush	flush	flush	flush
Nominal sensing distance	1 mm	1 mm	1 mm	1 mm
Type of connection	Cable 2 m	Cable 2 m	Connector M8	Connector M8
Special feature	Short type	Standard type	Short type	Standard type
<b>PNP DC NO contact</b>	<b>6532901001</b> KIB-M08PS/001-KL2VI	<b>6532902001</b> KIB-M08PS/001-KL2I	<b>6532942001</b> KIB-M08PS/001-KLSM8VI	<b>6532942003</b> KIB-M08PS/001-KLSM8I
<b>PNP DC NC contact</b>	<b>6532701001</b> KIB-M08PÖ/001-KL2VI	<b>6532702001</b> KIB-M08PÖ/001-KL2I	<b>6532742001</b> KIB-M08PÖ/001-KLSM8VI	<b>6532742003</b> KIB-M08PÖ/001-KLSM8I
<b>NPN DC NO contact</b>	<b>6532301001</b> KIB-M08NS/001-KL2V	<b>6532302001</b> KIB-M08NS/001-KL2	<b>6532342001</b> KIB-M08NS/001-KLSM8V	<b>6532342003</b> KIB-M08NS/001-KLSM8
<b>NPN DC NC contact</b>	<b>6532101001</b> KIB-M08NÖ/001-KL2V	<b>6532102001</b> KIB-M08NÖ/001-KL2	<b>6532142001</b> KIB-M08NÖ/001-KLSM8V	<b>6532142003</b> KIB-M08NÖ/001-KLSM8
<b>Technical data</b>				
Rated operating voltage range	$U_B$ 10–30 VDC	10–30 VDC	10–30 VDC	10–30 VDC
Rated operating current	$I_e$ ≤ 200 mA	≤ 200 mA	≤ 200 mA	≤ 200 mA
Max. switching voltage	$F$ 1000 Hz	1000 Hz	1000 Hz	1000 Hz
Short circuit-protection	cyclic	cyclic	cyclic	cyclic
Function/operating voltage indicator	LED/–	LED/–	LED/–	LED/–
<b>Mechanical data</b>				
Ambient temperature (min/max)	–25°C/+70°C	–25°C/+70°C	–25°C/+70°C	–25°C/+70°C
Protection class in accordance with IEC 529, EN 60529	IP67	IP67	IP67	IP67
Connection	3 x 0.14 mm <sup>2</sup>	3 x 0.14 mm <sup>2</sup>	M8 x 1	M8 x 1
Approvals				

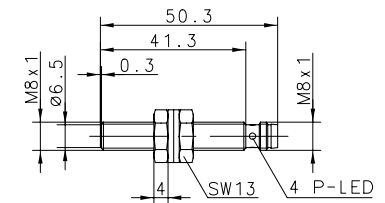
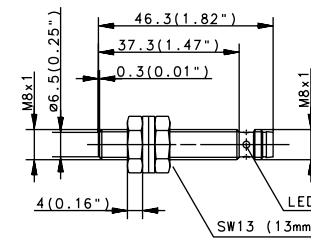
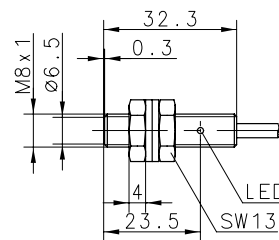
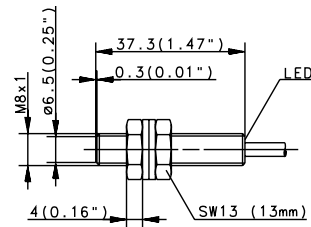
= IO-Link



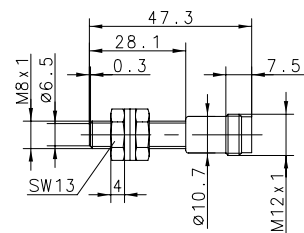
# INDUCTIVE SENSORS Type M8



Type	M8	M8	M8	M8
Enclosure material	Stainless steel 1.4305	Stainless steel 1.4305	Stainless steel 1.4305	Stainless steel 1.4305
Type of installation	flush	flush	flush	flush
Nominal sensing distance	1.5 mm	1.5 mm	1.5 mm	1.5 mm
Type of connection	Cable 2 m	Cable 2 m	Connector M8	Connector M8
Special feature				
<b>PNP</b>	<b>DC</b>	<b>NO contact</b>	<b>6932901001</b> KIB-M08PS/1,5-KL2	<b>6932942001</b> KIB-M08PS/1,5-KLSM8
<b>PNP</b>	<b>DC</b>	<b>NC contact</b>	<b>6502701001</b> KIB-M08PÖ/1,5-KL2	<b>6502742001</b> KIB-M08PÖ/1,5-KLSM8
<b>NPN</b>	<b>DC</b>	<b>NO contact</b>	<b>6932301001</b> KIB-M08NS/1,5-KL2	<b>6932342001</b> KIB-M08NS/1,5-KLSM8
<b>NPN</b>	<b>DC</b>	<b>NC contact</b>		
<b>Technical data</b>				
Rated operating voltage range	$U_B$	10–36 VDC	10–36 VDC	10–36 VDC
Rated operating current	$I_e$	≤ 200 mA	≤ 200 mA	≤ 200 mA
Max. switching voltage	F	1000 Hz	1000 Hz	1000 Hz
Short circuit-protection		cyclic	cyclic	cyclic
Function/operating voltage indicator		LED/-	LED/-	LED/-
<b>Mechanical data</b>				
Ambient temperature (min/max)		-25°C/+70°C	-25°C/+70°C	-25°C/+70°C
Protection class in accordance with IEC 529, EN 60529		IP67	IP67	IP67
Connection		3 x 0.14 mm <sup>2</sup>	3 x 0.14 mm <sup>2</sup>	M8 x 1



Type	M8		
Enclosure material	Stainless steel 1.4305		
Type of installation	flush		
Nominal sensing distance	1.5 mm		
Type of connection	Connector M12		
Special feature			
<b>PNP</b>	<b>DC</b>	<b>NO contact</b>	<b>6502942007</b> KIB-M08PS/0,1-KS12
<b>PNP</b>	<b>DC</b>	<b>NC contact</b>	
<b>NPN</b>	<b>DC</b>	<b>NO contact</b>	
<b>NPN</b>	<b>DC</b>	<b>NC contact</b>	
<b>Technical data</b>			
Rated operating voltage range	$U_B$	10–36 VDC	
Rated operating current	$I_e$	≤ 200 mA	
Max. switching voltage	F	1000 Hz	
Short circuit-protection	cyclic		
Function/operating voltage indicator	–/–		
<b>Mechanical data</b>			
Ambient temperature (min/max)	–25°C/+70°C		
Protection class in accordance with IEC 529, EN 60529	IP67		
Connection	M12 x 1		

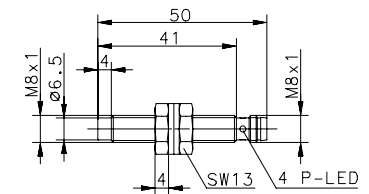
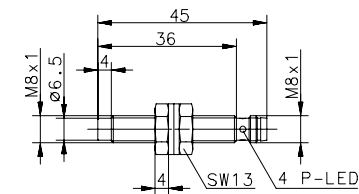
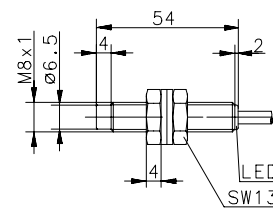
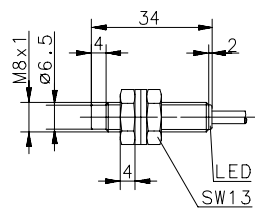


## INDUKTIVE SENSOREN Type M8



Type	M8	M8	M8	M8
Enclosure material	Stainless steel 1.4305	Stainless steel 1.4305	Stainless steel 1.4305	Stainless steel 1.4305
Type of installation	non-flush	non-flush	non-flush	non-flush
Nominal sensing distance	2 mm	2 mm	2 mm	2 mm
Type of connection	Cable 2 m	Cable 2 m	Connector M8	Connector M8
Special feature	Short type	Standard type	Short type	Standard type
<b>PNP DC NO contact</b>	<b>6532901002</b> KIN-M08PS/002-KL2VI	<b>6532902002</b> KIN-M08PS/002-KL2I	<b>6532942002</b> KIN-M08PS/002-KLSM8VI	<b>6532942004</b> KIN-M08PS/002-KLSM8I
<b>PNP DC NC contact</b>	<b>6532701002</b> KIN-M08PÖ/002-KL2VI	<b>6532702002</b> KIN-M08PÖ/002-KL2I	<b>6532742002</b> KIN-M08PÖ/002-KLSM8VI	<b>6532742004</b> KIN-M08PÖ/002-KLSM8I
<b>NPN DC NO contact</b>	<b>6532301002</b> KIN-M08NS/002-KL2V	<b>6532302002</b> KIN-M08NS/002-KL2	<b>6532342002</b> KIN-M08NS/002-KLSM8V	<b>6532342004</b> KIN-M08NS/002-KLSM8
<b>NPN DC NC contact</b>	<b>6532101002</b> KIN-M08NÖ/002-KL2V	<b>6532102002</b> KIN-M08NÖ/002-KL2	<b>6532142002</b> KIN-M08NÖ/002-KLSM8V	<b>6532142004</b> KIN-M08NÖ/002-KLSM8
<b>Technical data</b>				
Rated operating voltage range	$U_B$ 10–30 VDC	10–30 VDC	10–30 VDC	10–30 VDC
Rated operating current	$I_e$ ≤ 200 mA	≤ 200 mA	≤ 200 mA	≤ 200 mA
Max. switching voltage	$F$ 750 Hz	750 Hz	750 Hz	750 Hz
Short circuit-protection	cyclic	cyclic	cyclic	cyclic
Function/operating voltage indicator	LED/–	LED/–	LED/–	LED/–
<b>Mechanical data</b>				
Ambient temperature (min/max)	–25°C/+70°C	–25°C/+70°C	–25°C/+70°C	–25°C/+70°C
Protection class in accordance with IEC 529, EN 60529	IP67	IP67	IP67	IP67
Connection	3 x 0.14 mm <sup>2</sup>	3 x 0.14 mm <sup>2</sup>	M8 x 1	M8 x 1
Approvals				

= IO-Link



Type	M8		
Enclosure material	Stainless steel 1.4305		
Type of installation	non-flush		
Nominal sensing distance	2 mm		
Type of connection	Connector M12		
Special feature			
<b>PNP</b>	<b>DC</b>	<b>NO contact</b>	<b>6502942008</b> KIN-M08PS/002-KS12
<b>PNP</b>	<b>DC</b>	<b>NC contact</b>	
<b>NPN</b>	<b>DC</b>	<b>NO contact</b>	
<b>NPN</b>	<b>DC</b>	<b>NC contact</b>	
<b>Technical data</b>			
Rated operating voltage range	$U_B$	10–36 VDC	
Rated operating current	$I_e$	≤ 200 mA	
Max. switching voltage	F	750 Hz	
Short circuit-protection	cyclic		
Function/operating voltage indicator	–/–		
<b>Mechanical data</b>			
Ambient temperature (min/max)	–25°C/+70°C		
Protection class in accordance with IEC 529, EN 60529	IP67		
Connection	M12 x 1		
<b>Approvals</b>			

